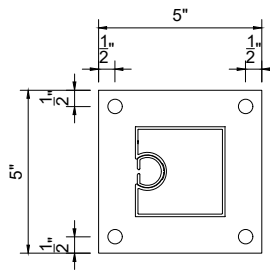
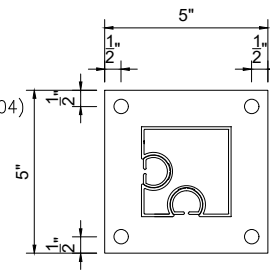


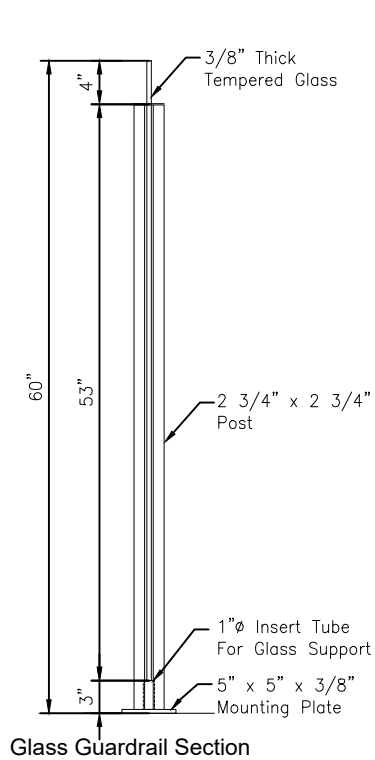
Post : 2 3/4"x2 3/4" (#1305)
 Plate: 5" x 5" x 3/8"
 Holes: 7/16"Ø
 3/8" Ø lag screws .Emb TBD
 Into S-P-F No 1/2



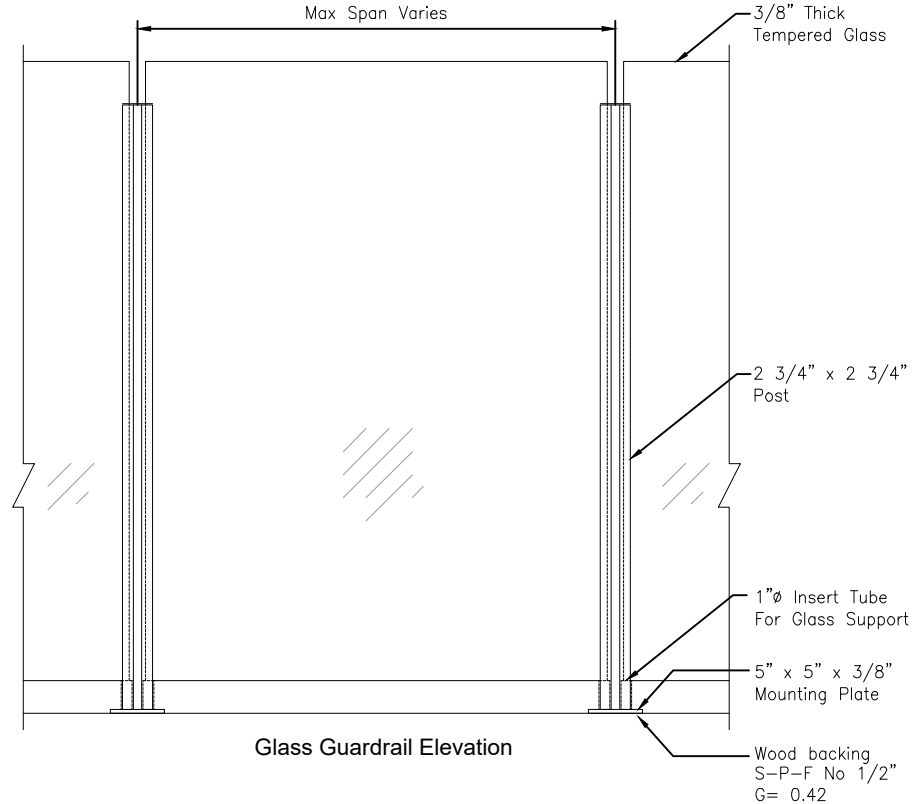
Post : 2 3/4"x2 3/4" (#1304)
 Plate: 5" x 5" x 3/8"
 Holes: 7/16"Ø
 3/8" Ø lag screws .Emb TBD
 Into S-P-F No 1/2



Post : 2 3/4"x2 3/4" (#1306)
 Plate: 5" x 5" x 3/8"
 Holes: 7/16"Ø
 3/8" Ø lag screws .Emb TBD
 Into S-P-F No 1/2



Glass Guardrail Section



Glass Guardrail Elevation

Note: STAR Rail Systems recommends usage of a protective rail cap or similar means to protect the top edge of glass infill from breakage due to impact. Consult with your local code official to ensure code compliance.

Title: 2 3/4" Topless System	Drawing No. SK3 - 60	Scale: 1"=1'-0"	S.T.A.R. SYSTEM INTERNATIONAL LTD. ALUMINUM RAILING & FENCING
	Drawn By: CS	Date: Nov. 2, 2023	
60" High Rail	Checked By:	Revision:	

