

**Burnaby Engineering Associates Ltd.**

Structural Engineering Consultants  
# 105 - 5715 Jersey Avenue, Burnaby, BC V5H 2L3  
Tel: 604 431 0055 Email: [jolanbm@shaw.ca](mailto:jolanbm@shaw.ca)

October 16, 2024  
STAR System International Ltd.  
7465 Conway Avenue  
Burnaby, B.C.  
V5E 2P7  
**Toll Free: 800-661-2773**  
**Fax: 604-438-4021**  
**Email: [info@starrail.com](mailto:info@starrail.com)**

RE: S.T.A.R. Topless Glass Railing - For "Part 9 "Residential Application Usage

TO WHOM IT MAY CONCERN:

The attached S.T.A.R. "2 ¾" Topless Glass Railing System meets the loading requirements of "Part 9 "( Residential application usage ) of the 2012 OBC and the 2020 NBC Building Codes.  
The Railing System should be installed as per approved shop drawings prior to installation.

The railing post to post spacing varies due to an infinite possibilities of deck installation variables such as substrate type, anchorage details to the substrate, wind loads and railing heights etc.  
The railing post placement needs to be reviewed and approved on a case-by-case basis, depending on the site conditions.

Maximum post to post spacings, when attaching the S.T.A.R. " 2 ¾" Topless aluminum and glass rails to SPF wood substrate is as following :

**36" high Residential Railing Applications** - 2 ¾" Topless Glass Rail System max post span is 48" o/c when attached to No. 1/2 or better SPF timber blocking ( G= 0.42) with 3/8" lagscrews with a minimum 3.5" thread embedment ( not including the lag tip portion) into the structurally sound timber blocking designed by others

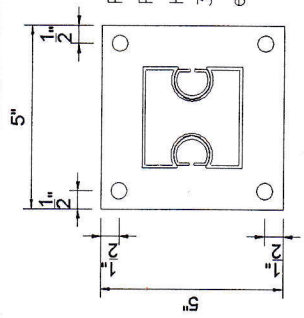
**42" high Residential Railing applications**- 2 ¾" Topless Glass Rail System max post span is 42" o/c when attached to No. 1/2 or better SPF timber blocking ( G = 0.42) with 3/8" lags with a minimum 3.5" thread embedment ( not including the lag tip portion) into the structurally sound *timber blocking designed by others*

***\*\*NOTE\*\*It is the responsibility of the railing applicator to confirm with local code officials that the usage of the 2 ¾" Topless glass rail system without the usage of top rail and/or protective top cap meets the local code officials approval prior to installation of the rail system***

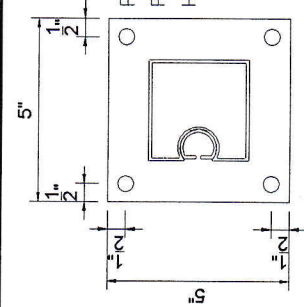
Should you have any questions or comments regarding the foregoing please call the undersigned.

Sincerely  
Julian Gy. Bozsik M.Eng, P.Eng .

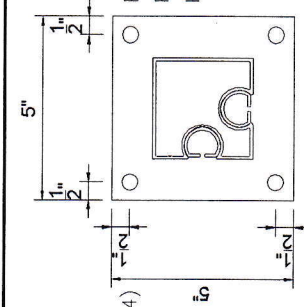




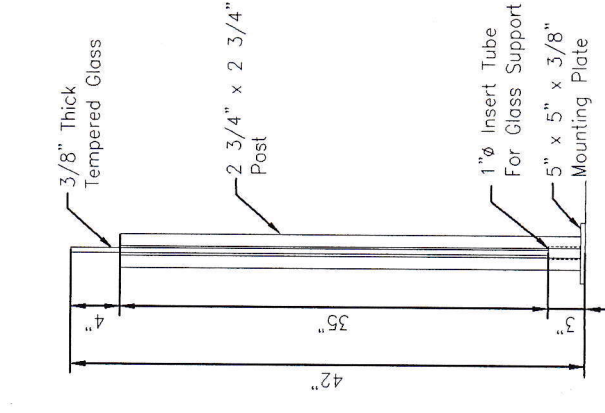
Post : 2 3/4"x2 3/4" (#1305)  
 Plate: 5" x 5" x 3/8"  
 Holes: 7/16"  $\phi$   
 3/8"  $\phi$  logscrews x 5.5"(min)  
 emb. into S-P-F No 1/2



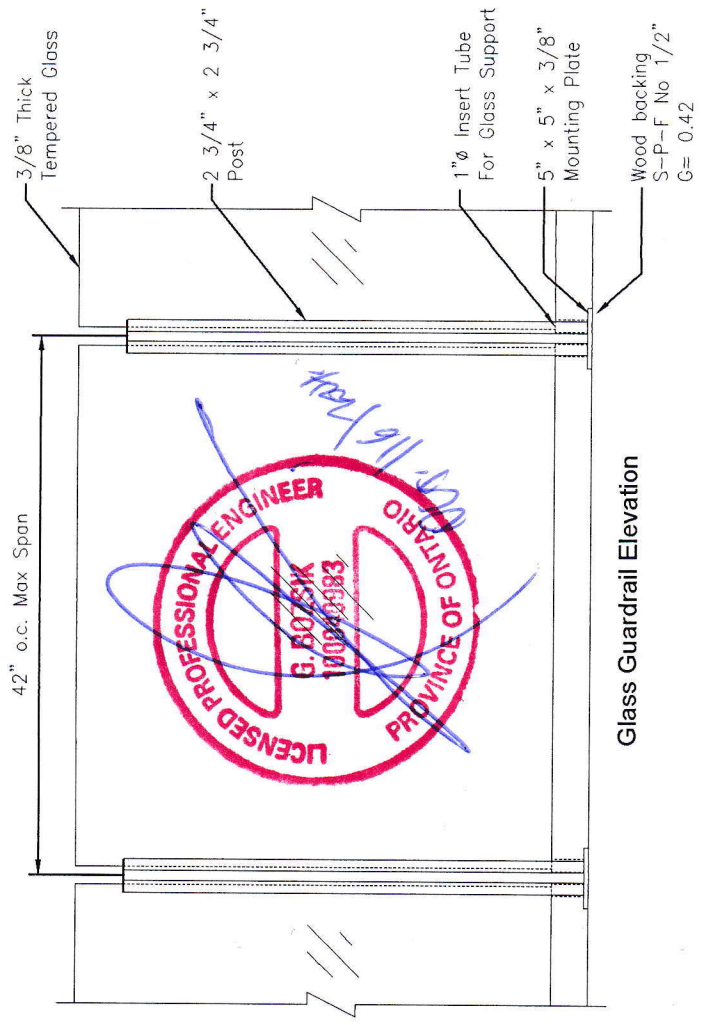
Post : 2 3/4"x2 3/4" (#1304)  
 Plate: 5" x 5" x 3/8"  
 Holes: 7/16"  $\phi$



Post : 2 3/4"x2 3/4" (#1306)  
 Plate: 5" x 5" x 3/8"  
 Holes: 7/16"  $\phi$



Glass Guardrail Section

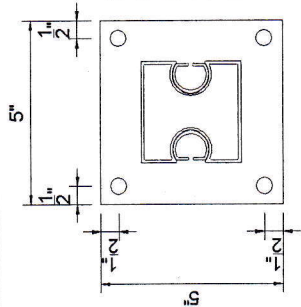


Glass Guardrail Elevation

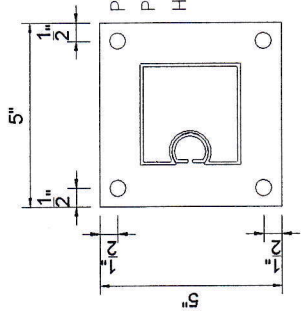


Note: STAR Rail Systems recommends usage of a protective rail cap or similar means to protect the top edge of glass infill from breakage due to impact. Consult with your local code official to ensure code compliance.

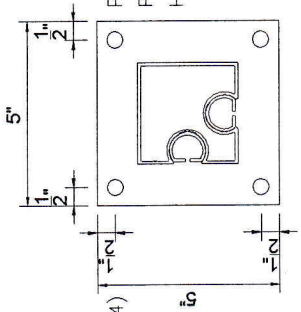
Title:		2 3/4" Topless System		Scale: 1"=1'-0"	
Drawing No.		SK3 - 42		Date: Nov. 2, 2023	
Drawn By:		CS		Revision:	
Checked By:					
S.T.A.R. SYSTEM INTERNATIONAL LTD. ALUMINUM RAILING & FENCING					
42" High Rail					



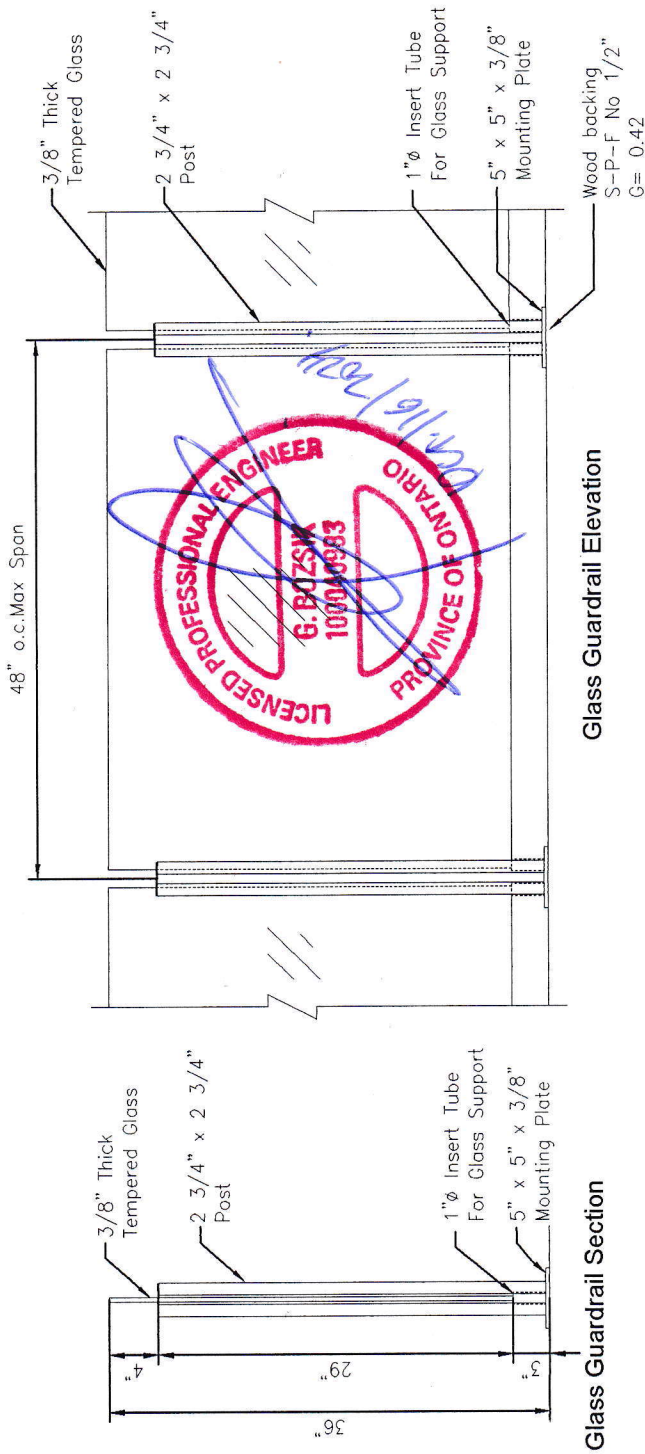
Post : 2 3/4"x2 3/4" (#1305)  
 Plate: 5" x 5" x 3/8"  
 Holes: 7/16"φ  
 3/8" φ logscrews into S-P-F  
 No 1/2 x 3.5" Emb



Post : 2 3/4"x2 3/4" (#1304)  
 Plate: 5" x 5" x 3/8"  
 Holes: 7/16"φ



Post : 2 3/4"x2 3/4" (#1306)  
 Plate: 5" x 5" x 3/8"  
 Holes: 7/16"φ



Glass Guardrail Section

Glass Guardrail Elevation

Note: STAR Rail Systems recommends usage of a protective rail cap or similar means to protect the top edge of glass infill from breakage due to impact. Consult with your local code official to ensure code compliance.

Title:

2 3/4" Topless System

36" High Rail

Drawing No.	SK3 - 36	Scale:	1"=1'-0"
Drawn By:	CS	Date:	Nov. 2, 2023
Checked By:		Revision:	

**S.T.A.R. SYSTEM INTERNATIONAL LTD.**  
 ALUMINUM RAILING & FENCING